

# IT'S A JENSEN

*Distinctive Eloquence for a Lifetime*



**ALL RAILING IS CUSTOM ORDER:  
TO YOUR DIMENSIONS  
TO YOUR DESIGN  
TO YOUR FINISH  
PLEASE CALL**

Custom sizing available • All items handcrafted and may vary slightly

80

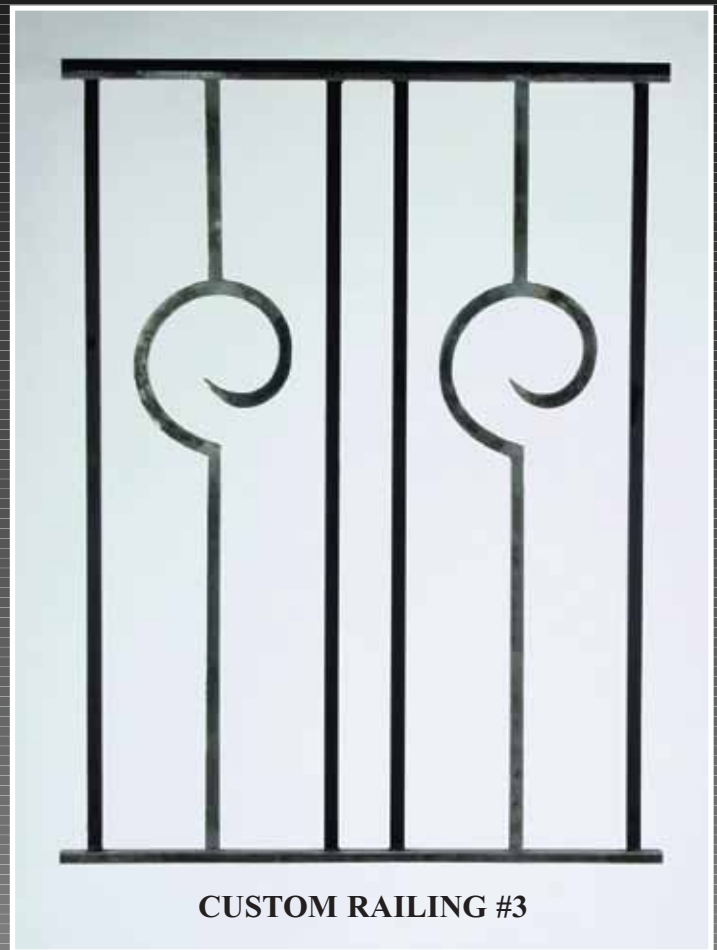
JENSEN DESIGN, inc. • 933 S. West St. • Wichita, Kansas 67213 • Ph (316) 943-7900 • Fax (316) 943-1411  
E-mail: [jensdesign@aol.com](mailto:jensdesign@aol.com) • [www.jensendesign.net](http://www.jensendesign.net)

# IT'S A JENSEN

---

*Distinctive Eloquence for a Lifetime*

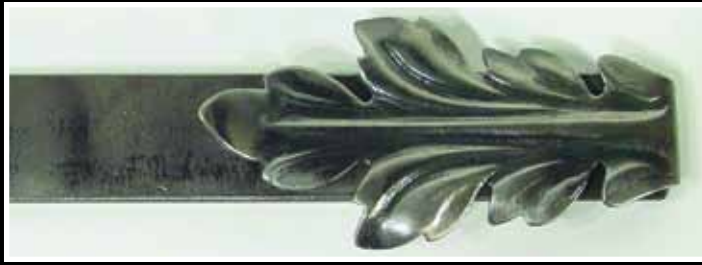
**ALL RAILING IS CUSTOM ORDER:  
TO YOUR DIMENSIONS  
TO YOUR DESIGN  
TO YOUR FINISH  
PLEASE CALL**



# IT'S A JENSEN

*Distinctive Eloquence for a Lifetime*

STANDARD FINISHES ~ 100'S



#100 BRUSHED STEEL



#101 RUSTED CAST IRON



#102 OLDE BLACK



#103 SMOKEY STONE



#104 MARSEILLES BLACK

Custom sizing available • All items handcrafted and may vary slightly

# IT'S A JENSEN

---

*Distinctive Eloquence for a Lifetime*

## STANDARD FINISHES ~ 200'S

**#200 BROWN RUST**



**#201 RED RUST**



**#202 PICKLE RUST**



**#203 JENSEN RUST**



**#204 OLSEN BROWN**



# IT'S A JENSEN

*Distinctive Eloquence for a Lifetime*

**STANDARD FINISHES ~ 300'S**



**#300 ANTIQUED WHITE**



**#301 ANTIQUED PEACH**



**#302 WHITE KIDD**



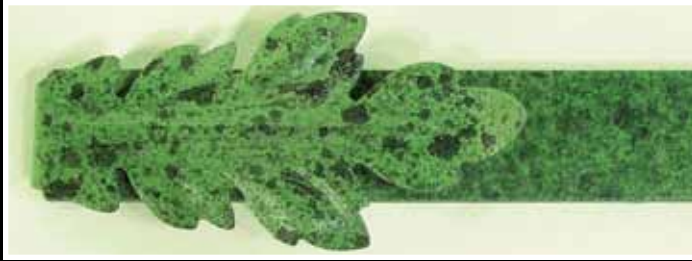
**#303 RIDGEFIELD STONE**

Custom sizing available • All items handcrafted and may vary slightly

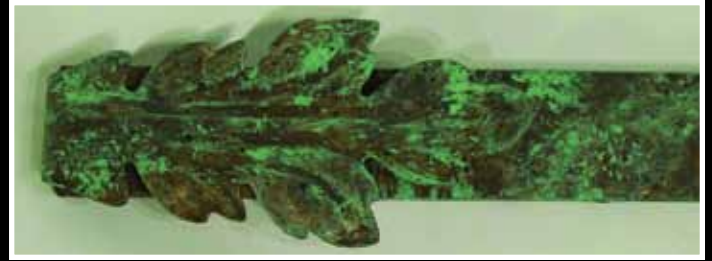
# IT'S A JENSEN

*Distinctive Eloquence for a Lifetime*

## STANDARD FINISHES ~ 400'S



**#400 JENSEN COPPER**



**#401 ANTIQUED BRASS**



**#402 ANTIQUED COPPER**



**#403 VERDE**



**#404 WEATHERED BRASS**



**#405 GEORGIA TEAL W/ BURGUNDY**



**#406 SLATE BLUE**

# IT'S A JENSEN

*Distinctive Eloquence for a Lifetime*

## UPCHARGE FINISHES ~ 500'S



**#500 ANTIQUED GOLD LEAF**



**#502 SILVER LEAF**



**#503 GOLD LEAF**



**#504 VARIGATED GOLD LEAF**



**#505 ANTIQUED SILVER LEAF**



**#506 ANTIQUED COPPER LEAF**

Custom sizing available • All items handcrafted and may vary slightly

# IT'S A JENSEN

---

*Distinctive Eloquence for a Lifetime*

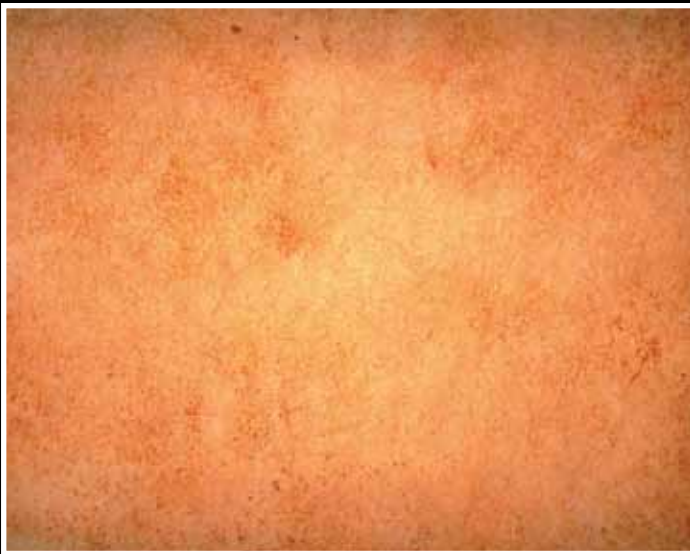
## DIFFUSERS



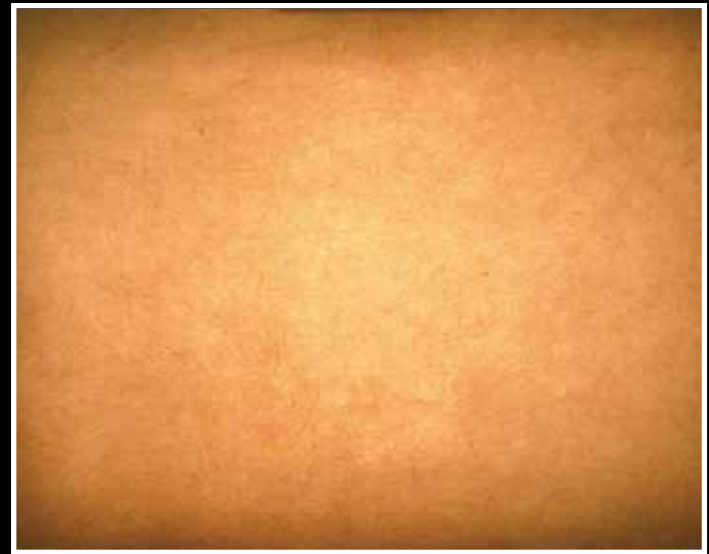
**DIFFUSER 001**



**DIFFUSER 002**



**DIFFUSER 003**



**DIFFUSER 004**

**SEE SCONCES**

**Page 10**



# JENSEN DESIGN, inc.



H.E.S. Inc. / Los Angeles, CA



Kansas City Union Station Renovation • MDC Architecture / Kansas City, MO



## CONTRACT HOSPITALITY

chandeliers  
sconces  
conference tables  
rails  
booth dividers  
push plates  
glass racks  
bars  
barstools  
mirrors  
bistro tables  
executive desks  
consoles  
firescreens

With nearly 20 years experience and over 15,000 square feet at our facility, we can accommodate your largest projects. Hotels, restaurants, country clubs and corporate buildings are just a few of the places you will find Jensen Design products. We have the desire and capabilities to do completely custom jobs. Call us and let work for you on your next project.



Arthur Chabon Arch / New York, NY



Jensen Design / Wichita, KS



Rock Cottage Glassworks / Merriam, KS